

# **2001 OWNER'S MANUAL SUPPLEMENT FOR THE CARRYALL 2 XRT VEHICLE**

## **SUPPLEMENT TO THE 2001 CARRYALL GASOLINE VEHICLE OWNER'S MANUAL**

---

The following pages are supplemental to the 2001 Carryall Utility Gasoline Vehicle Owner's Manual. This supplement documents only those sections of the manual requiring changes or additions describing features and procedures specific to the 2001 Carryall 2 XRT model vehicle. All other information in the Owner's Manual pertaining to the Carryall 2 vehicle applies to the Carryall 2 XRT model as well. The placement of sections in this supplement corresponds to the placement of sections in the manual. If you do not have a 2001 Carryall Utility Gasoline Vehicle Owner's Manual, you may obtain one from your Club Car dealer or distributor.

This supplement includes installation instructions for the following:

- Rear fenders
- Wheel and tire assemblies

Supplement Part No. 102189813

Print Code 0800B00000

## NOTICE

This supplement should be used in conjunction with the 2001 Carryall Utility Gasoline Vehicle Owner's Manual.

This manual contains proprietary information that is protected by copyright. All rights are reserved. No part of this supplement may be photocopied, reproduced, or translated to another language without the written consent of Club Car, Inc. Club Car is not liable for errors in this supplement or for incidental or consequential damages that result from the use of the material in this supplement.

The information contained in this document is subject to change without notice.

Club Car reserves the right to make design changes to either gasoline or electric vehicles without obligation to make these changes on units previously sold.

The Club Car Limited Warranty for Carryall 2 XRT vehicles appears at the end of the Owner's Manual. No other warranties, express or implied, are contained herein. Please complete and return the warranty registration card included in the Owner's Manual.

These vehicles do not conform to Federal Motor Vehicle Safety Standards for automobiles or to FMVSS 500 for low-speed vehicles, and are not designed or equipped for use on public streets, roads, or highways.

This supplement effective July 24, 2000

©2000 Club Car, Inc.

## TABLE OF CONTENTS

Safety Details .....	3
Vehicle Feature Identification .....	4
Pre-Operation Checklist .....	6
Controls and Indicators .....	6
Driving Instructions .....	6
Loading and Unloading .....	6
Towing with the Vehicle .....	6
Tire Specifications .....	6
Electric Winch Accessory .....	7
Vehicle Specifications .....	7
Rear Fender Installation .....	9
Wheel and Tire Installation .....	11

## SAFETY DETAILS

---

### **WARNING**

- THIS SUPPLEMENT AND THE 2001 CARRYALL UTILITY GASOLINE VEHICLE OWNER'S MANUAL SHOULD BE READ COMPLETELY BEFORE ATTEMPTING TO OPERATE OR SERVICE THE VEHICLE. FAILURE TO HEED THE WARNINGS OR FOLLOW THE INSTRUCTIONS IN THIS SUPPLEMENT AND IN THE MANUAL COULD RESULT IN PROPERTY DAMAGE, SEVERE PERSONAL INJURY, OR DEATH.

***See the 2001 Carryall Utility Gasoline Vehicle Owner's Manual for complete safety details.***

# CARRYALL 2 XRT VEHICLE

**⚠ WARNING**

**ROLLOVER OR FALLING OFF MAY CAUSE DEATH.**

- Before using vehicle, read operating instructions.
- Remain seated and hold on to seat handle while moving.
- Do not start vehicle until all occupants are seated.
- Two (2) persons per seat maximum.
- Operate from driver side only and not on public roads.
- Keep entire body inside vehicle while moving.
- Drive slowly in turns and straight up and down slopes.
- Do not leave children unattended on vehicle.
- Never operate under the influence of alcohol or drugs.
- Use brakes to reduce speed when coasting downhill.
- Never stand in front of or behind vehicle.

CCI 1019606-01

**DRIVER/PASSENGER  
WARNING DECAL**

**OPERATING INSTRUCTIONS**

- Read Owner's Manual and safety warnings located on dash panel prior to driving.
  - Study and understand controls.
- Make sure wheels are turned in desired direction.
- Turn key to "ON" position and be sure nothing is in your path.
- While vehicle is stopped, select direction by placing shift lever or switch in desired position:
  - F – Forward   N – Neutral   R – Reverse (Buzzer will sound)
- Vehicle will start moving when accelerator pedal is depressed.
- Slowly depress accelerator pedal to increase speed. Park brake will release when accelerator pedal is depressed.
- To stop, release accelerator pedal and depress brake pedal.
- After stopping, firmly depress park brake until it locks.
- Place forward and reverse switch in neutral position.

Turn key "OFF" and remove key when not in use.

CCI 101621601

**OPERATING INSTRUCTIONS**

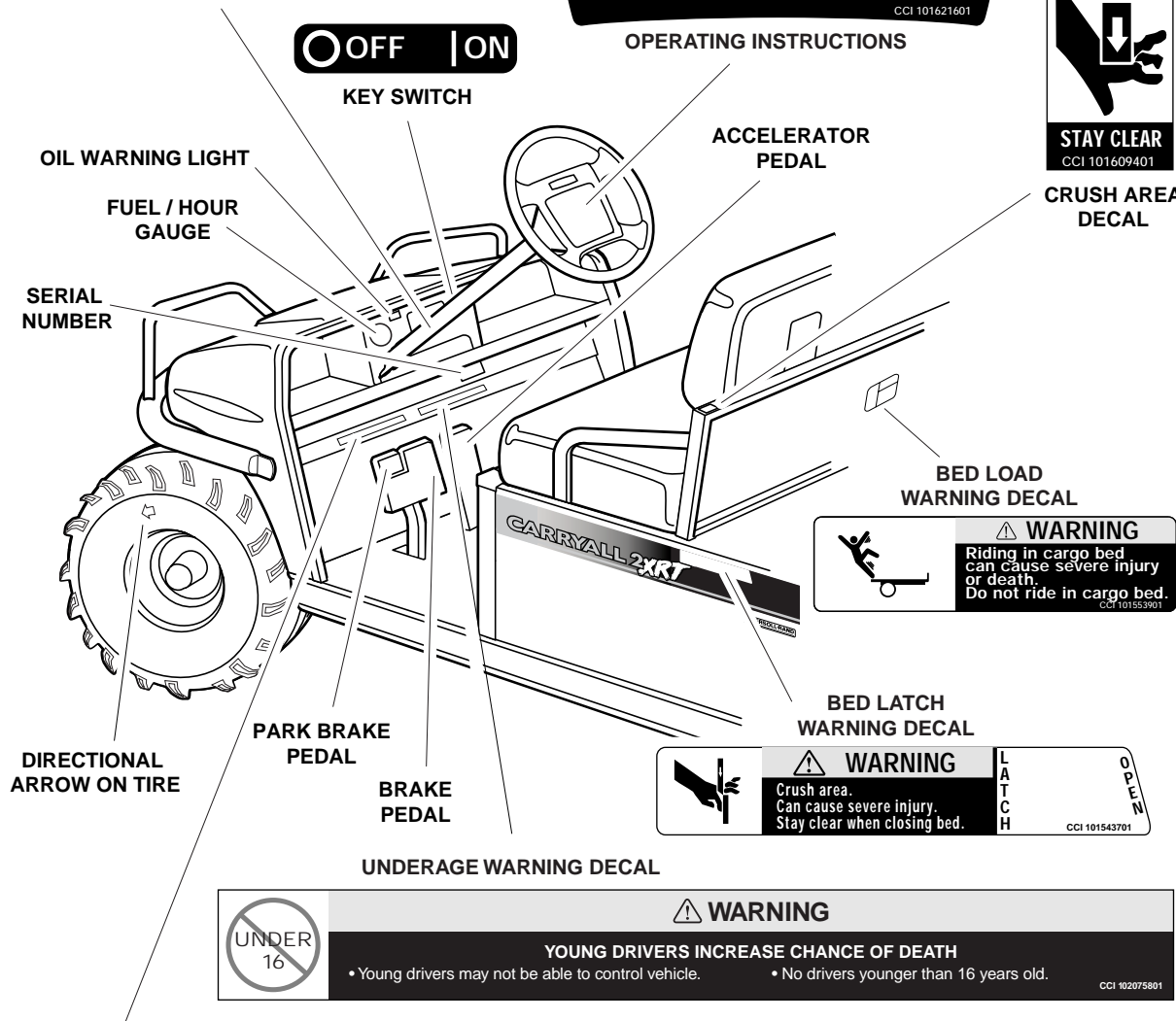
**⚠ WARNING**

**CRUSH AREA**

**STAY CLEAR**

CCI 101609401

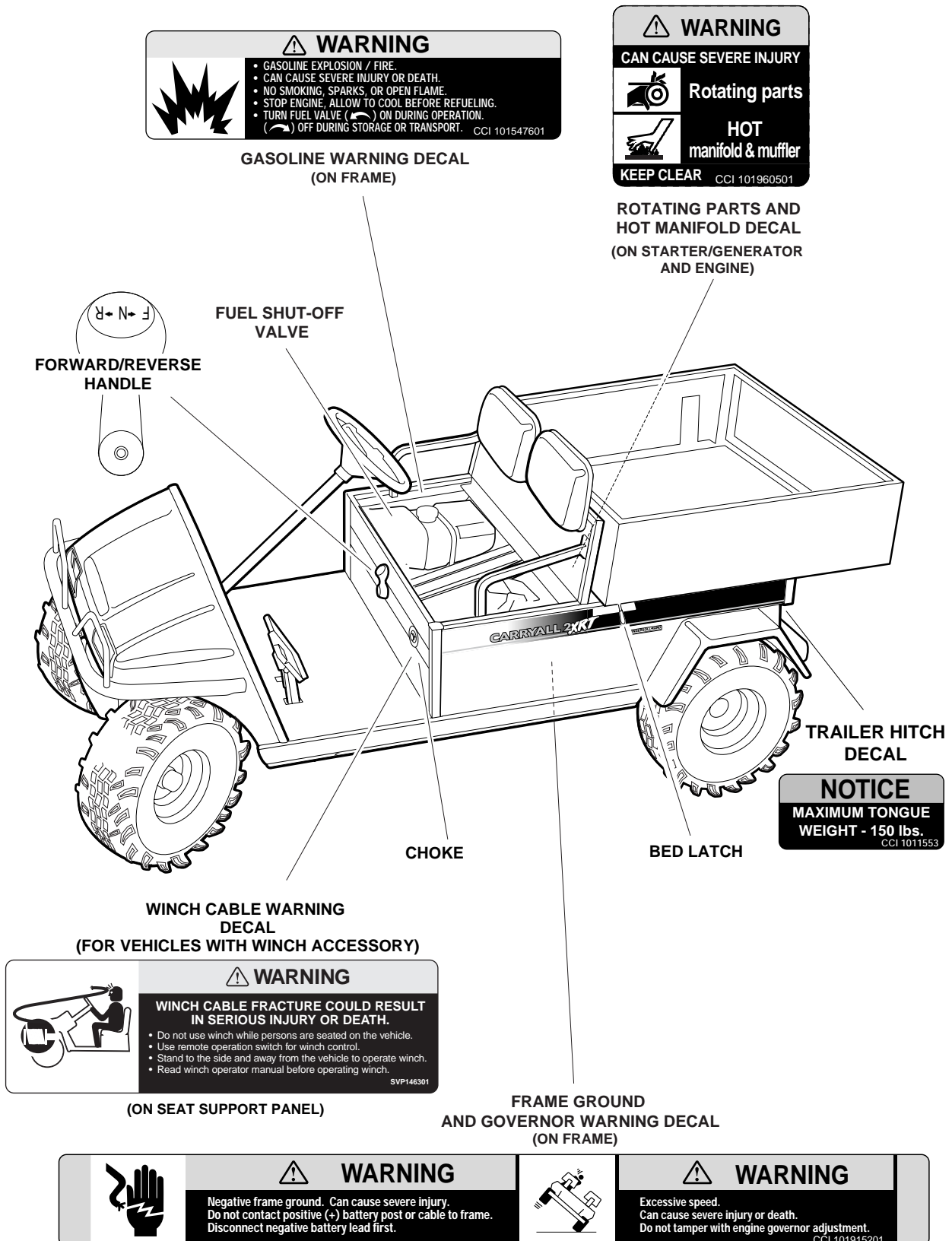
**CRUSH AREA  
DECAL**



**VEHICLE LOADING DECAL**

<p><b>VEHICLE LOADING</b></p> <p>Read Owner's Manual and warnings on dash.</p>	<ul style="list-style-type: none"> <li>• Vehicle rated capacity - 900 lbs. on level surface only. Weight to include passengers, cargo bed load, and gross trailer weight. See Owner's Manual.</li> <li>• Maximum cargo load - 500 lbs. Weight to include cargo bed load and gross trailer weight.</li> <li>• Maximum trailer hitch tongue weight - 150 lbs.</li> </ul>	<ul style="list-style-type: none"> <li>• Cargo should be evenly spread over the floor of the cargo bed as far forward as possible and secured.</li> <li>• For vehicle stability, when fully loaded, drive slowly and avoid stopping on or backing down steep hills.</li> <li>• Avoid top heavy loads. See Owner's Manual.</li> <li>• When driving on uneven terrain or down steep hills, reduce speed and load.</li> </ul>
	CCI 102006701	

# FEATURE IDENTIFICATION



---

## PRE-OPERATION CHECKLIST

---

- **Warning Decals:** Check to be sure all warning and operation decals are in place. See pages 4 and 5 of this supplement.
- **Tires:** Check for proper tire pressure. See Tire Specifications in this supplement.

**See the Owner's Manual for remaining checklist items before test-driving the vehicle.**

## PERFORMANCE INSPECTION

- **Governor:** Check maximum speed of vehicle. The Carryall 2 XRT should operate at 15-17 mph (24-27 km/h) on a level surface.

**See the Owner's Manual for complete performance inspection procedures.**

---

## DRIVING INSTRUCTIONS

---

### **WARNING**

- NO ONE UNDER THE AGE OF 16 YEARS SHOULD BE ALLOWED TO DRIVE THE VEHICLE.
- NEVER ATTEMPT JUMPS.

**SEE OWNER'S MANUAL FOR ALL OTHER DRIVING INSTRUCTION WARNING STATEMENTS.**

---

## CONTROLS AND INDICATORS

---

Controls for the Carryall 2 XRT vehicle are the same as described in the Owner's Manual for the Carryall 2 vehicle.

---

## LOADING AND UNLOADING

---

Center and secure cargo as far forward as possible in the cargo bed. Do not overload the vehicle. The total capacity of the vehicle is 900 lb. (409 kg) for the Carryall 2 XRT. This includes all passengers, the load in the cargo bed, and the sum of the gross weight and tongue weight of a trailer. Maximum sum of the gross weight and tongue weight of trailer is 500 lb. (227 kg). The tongue weight of any trailer should never exceed 150 lb. (68 kg).

### **WARNING**

- DO NOT EXCEED THE RATED CAPACITY OF THE VEHICLE. OVERLOADING CAN AFFECT VEHICLE HANDLING OR CAUSE COMPONENT FAILURE, RESULTING IN LOSS OF CONTROL OF VEHICLE AND POSSIBLE SEVERE PERSONAL INJURY.

**SEE OWNER'S MANUAL FOR ALL OTHER LOADING AND UNLOADING WARNING STATEMENTS.**

---

## TOWING WITH THE VEHICLE

---

Total vehicle capacity, including tow vehicle load and gross trailer weight, must not exceed 900 lb. (409 kg) for the Carryall 2 XRT.

---

## TIRE SPECIFICATIONS

---

Recommended tire pressure for the Carryall 2 XRT off-road tire is 14-18 psi (97-124 kPa).  
Recommended tire pressure for the Carryall 2 XRT turf tire is 18-20 psi (124-138 kPa).

## ELECTRIC WINCH ACCESSORY

If your vehicle is equipped with an electric winch, read and follow all manufacturer safety warnings and instructions in the winch operator manual, as well as the following WARNING and CAUTION statements. Make sure a winch warning decal is affixed to the vehicle on the seat support panel next to the receptacle for the remote operation switch. **See Vehicle Feature Identification on pages 4 and 5.**

The winch kit available from Club Car includes a remote operation switch which enables the operator to move away from the vehicle and cable.

### WARNING

- BEFORE BEGINNING A WINCH OPERATION:
  - TURN KEY SWITCH **OFF**, PUT FORWARD/REVERSE HANDLE IN **NEUTRAL**, AND ENGAGE THE PARKING BRAKE.
  - DO NOT USE WINCH WHILE PERSONS ARE SEATED ON THE VEHICLE.
  - STAND TO THE SIDE AND AWAY FROM THE VEHICLE TO OPERATE WINCH.

### CAUTION

- USE OF THE WINCH FOR AN EXTENDED PERIOD OF TIME COULD DISCHARGE THE BATTERY. KEEP WINCH OPERATIONS AS SHORT AS POSSIBLE, AND RUN THE ENGINE AFTER THE WINCH OPERATION TO RECHARGE THE BATTERY.

## VEHICLE SPECIFICATIONS

SPECIFICATIONS	
POWER SOURCE	Gasoline
<b>Engine:</b> 4-cycle OHV, 351-cc, 11-hp rated, single-cylinder, air-cooled, with pressure lubrication system.	•
<b>Fuel System:</b> Side-draft carburetor with float bowl, fixed jets, fuel filter, and impulse fuel pump.	•
<b>Governor:</b> Automatic ground-speed sensing, internally geared in unitized transaxle.	•
<b>Ignition:</b> Transistor electronic ignition with electronic RPM limiter.	•
<b>Unitized Transaxle:</b> Fully synchronized forward and reverse with neutral (11.8:1 forward, 17.1:1 reverse).	•
<b>Electrical System:</b> 12 volt, 500 cca at 0 °F (-17.8 °C), 650 at 32 °F (0 °C). 105-minute reserve capacity and 35-amp charging capacity.	•
<b>Torque Converter:</b> Automatic, variable-speed, dry type.	•
STEERING/SUSPENSION/BRAKES	
<b>Steering:</b> Self-adjusting rack and pinion.	•
<b>Suspension:</b> Front and rear multi-leaf springs with dual hydraulic shocks.	•
<b>Brakes:</b> Mechanical brake cable system to manually adjusted drum brakes on each wheel. Park brake releases automatically. Self-adjusting multi-latch ratchet and pawl.	•
BODY CHASSIS	
<b>Frame/Chassis:</b> Twin I-Beam welded aluminum.	•
<b>Side and Rear Body:</b> All aluminum.	•
<b>Front Body:</b> ArmorFlex®.	•
<b>Front Body Finish:</b> Matched paint finish over molded-in color.	•
<b>Tires:</b> Heavy Duty All Terrain: tubeless, 6-ply rated. Turf: tubeless, 4-ply rated.	22 x 11.00 x 10 in. 23 x 10.50 x 12 in.
Specifications continued on next page.	

SPECIFICATIONS	
<b>SEATING CAPACITY/FUEL CAPACITY</b>	
<b>Standard Seating Capacity:</b>	2
<b>Fuel Tank:</b> 7 gallons (26.5 liters), unleaded gasoline only.	•
<b>DIMENSIONS/WEIGHT</b>	
<b>Overall Length:</b>	120.4 in. (305 cm)
<b>Overall Width:</b>	51.3 in. (130 cm)
<b>Overall Height:</b> At steering wheel.	51.1 in. (129 cm)
<b>Overall Height:</b> At light bar.	75.3 in. (191 cm)
<b>Wheelbase:</b>	78.5 in. (199 cm)
<b>Ground Clearance:</b> Under differential.	6.4 in. (16 cm)
<b>Front Wheel Tread:</b>	36.5 in. (92 cm)
<b>Rear Wheel Tread:</b>	41.3 in. (104 cm)
<b>Weight:</b> Gasoline-powered vehicle (dry).	910 lb. (413.6 kg)
<b>Forward Speed:</b>	15 - 17 mph (24.1 - 27.4 km/h)
<b>Governed RPM:</b>	2900 ± 30
<b>Curb Clearance Circle:</b> (diameter)	21 ft.-8 in. (660 cm)
<b>Turning Radius:</b> (per SAE J 695)	130 in. (330 cm)
<b>Load Bed Height:</b>	29.8 in. (75 cm)
<b>Load Bed Size:</b> Box bed inside dimensions.	48.8 x 49.8 x 10.9 in. (124 x 126 x 28 cm) (15.3 cubic feet)
<b>Floorboard Height:</b>	16.0 in. (40 cm)
<b>Vehicle Rated Capacity:</b> (level surface only)	900 lb. (409 kg) Total Capacity 500 lb. (227 kg) Bed Capacity
<b>Seat Height:</b> At seat bottom.	28.0 in. (71 cm)

**NOTE: CLUB CAR, INC. RESERVES THE RIGHT TO CHANGE SPECIFICATIONS AND DESIGN OF EITHER GASOLINE OR ELECTRIC VEHICLES AT ANY TIME WITHOUT NOTICE AND WITHOUT OBLIGATION TO MAKE THESE CHANGES ON UNITS PREVIOUSLY SOLD.**



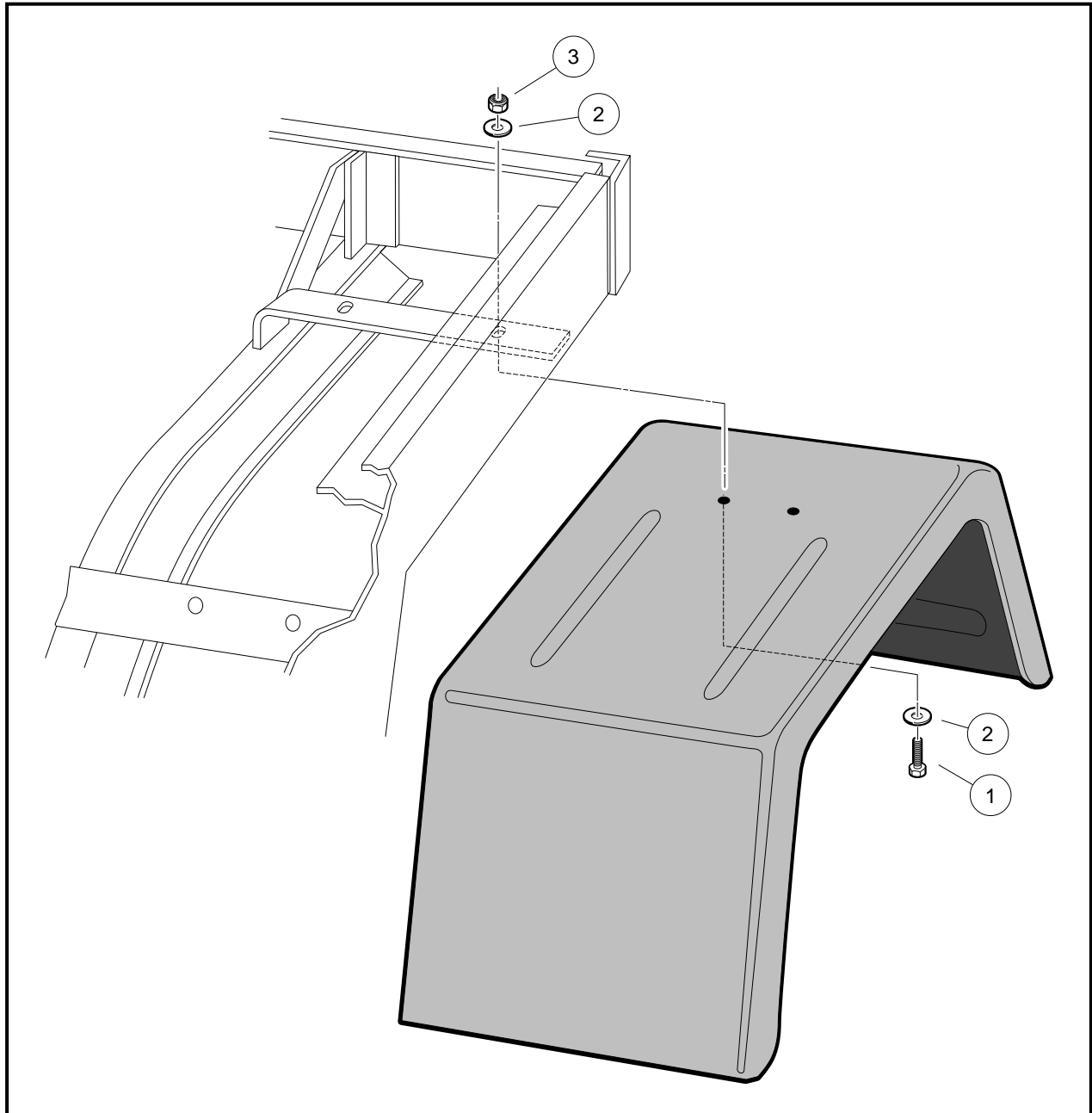


Figure 1 Install Hardware in Fender Hole

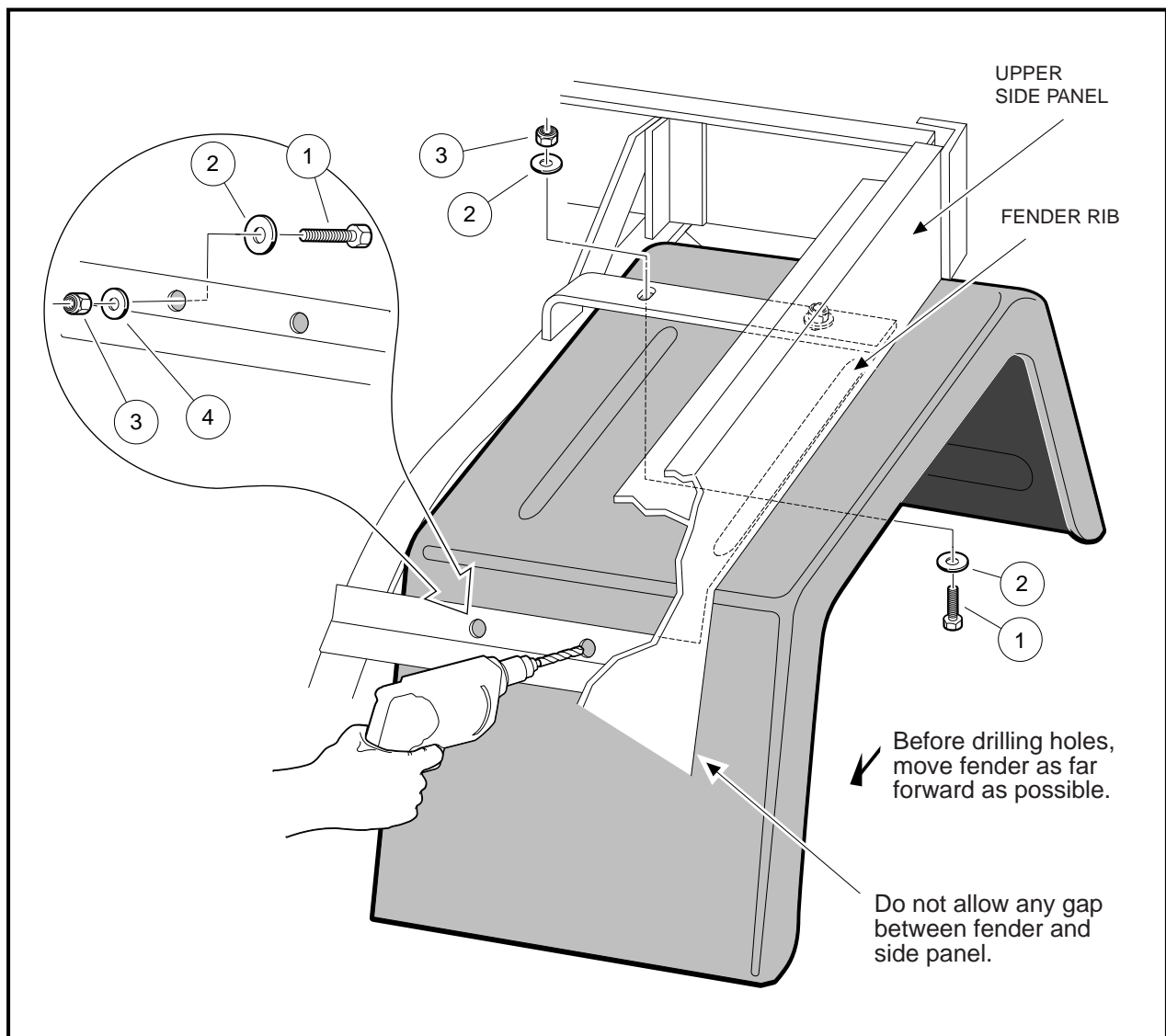
## REAR FENDER INSTALLATION

1. Unload the cargo bed.
2. Open the cargo bed and engage the prop rod.

### **⚠ WARNING**

- USE CAUTION WHEN WORKING UNDER BED. BE SURE PROP ROD IS SECURE. OTHERWISE THE BED COULD FALL, RESULTING IN SEVERE PERSONAL INJURY OR DEATH.

3. Position a fender in the vehicle, align the hole in the fender with the slot in the frame as shown and install bolt (1), flat washers (2), and locknut (3) (**Figure 1**). Finger-tighten only at this time.
4. Make sure fender is correctly aligned in the vehicle.
  - 4.1. Make sure outer fender rib is flush with the inside surface of the upper side panel (**Figure 2**).
  - 4.2. Move fender as far forward as possible. There should be no gap between the fender and side panel (**Figure 2**).
5. Drill three 5/16 inch holes through the fender using existing frame holes as guides (**Figure 2**).
6. Install bolt (1), large flat washers (2), and locknut (3) at top hole as shown (**Figure 2**). Tighten mounting hardware at both upper holes to 35 in-lb (4.0 N·m).
7. Install bolt (1), large flat washer (2), small flat washer (4) and locknut (3) in both forward-facing holes in frame and fender (**Figure 2**). Tighten to 35 in-lb (4.0 N·m).
8. Repeat steps 3 - 7 for the other rear fender.
9. Lower cargo bed.



**Figure 2 Drill Additional Mounting Holes**

## WHEEL AND TIRE INSTALLATION

### NOTE

- UPON VEHICLE DELIVERY, THE SHIPPING WHEEL AND TIRE ASSEMBLIES MUST BE REPLACED BY THE STANDARD XRT WHEEL AND TIRE ASSEMBLIES, WHICH ARE DELIVERED IN THE VEHICLE CARGO BED.
- DO NOT REMOVE THE WARNING TAG ATTACHED TO THE STEERING WHEEL UNTIL THE SHIPPING WHEEL AND TIRE ASSEMBLIES HAVE BEEN REPLACED BY STANDARD XRT WHEEL AND TIRE ASSEMBLIES.

Unlike other Club Car Carryall vehicles, the Carryall 2 XRT's front and rear wheels are NOT interchangeable. The rear wheels have a different offset than do the front wheels; The rear wheels must be installed with the deeper offset facing out.

A rectangular sticker on each wheel designates its correct location on the vehicle.

LF —Left Front (driver side)

RF—Right Front (passenger side)

LR—Left Rear

RR—Right Rear

Standard Carryall 2 XRT tires (off-road) are directional and must be installed according to the directional arrow mark on each tire, (arrow must indicate forward rotation of tire) or tread performance will be severely compromised. The optional turf tire is not directional, and installation is dictated only by correct wheel position, not tire direction.

1. Slightly loosen the lug nuts on all four wheels.
2. Raise one end of the vehicle until the tires are off the ground by approximately six inches. **See following WARNING.**

### WARNING

- LIFT ONLY ONE END OF A VEHICLE AT A TIME. BEFORE LIFTING, SET THE PARK BRAKE WHEN LIFTING THE FRONT OF THE VEHICLE, UNLOAD THE CARGO BED, AND CHOCK THE WHEELS THAT REMAIN ON THE FLOOR. USE A SUITABLE LIFTING DEVICE (CHAIN HOIST OR HYDRAULIC FLOOR JACK) WITH 1000 LB. (454 KG) MINIMUM LIFTING CAPACITY. DO NOT USE LIFTING DEVICE TO HOLD VEHICLE IN RAISED POSITION. ALWAYS USE APPROVED JACK STANDS OF PROPER WEIGHT CAPACITY TO SUPPORT VEHICLE.

3. Remove the lug nuts and the wheel.
4. Install the correct wheel and tire assembly and tighten lug nuts (using a crisscross pattern) until they are snug. **Arrow must indicate forward rotation of tire.**
5. Repeat steps 3 and 4 for the other side of the vehicle.
6. Lower the vehicle to the ground and finish tightening lug nuts (using a crisscross pattern) to 55 ft-lb. (74.6 N·m).
7. Repeat steps 2-6 for the other end of the vehicle.

