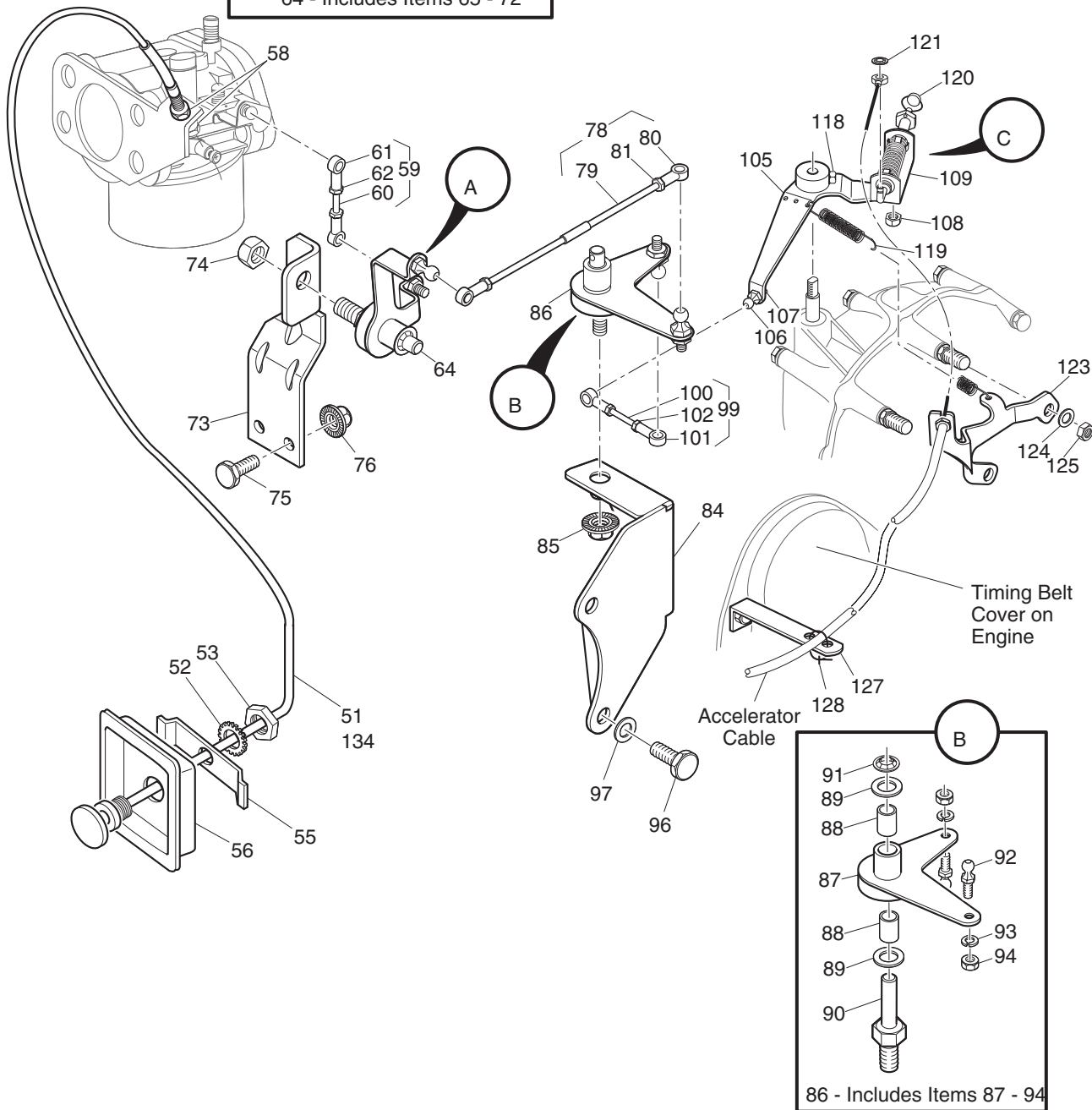
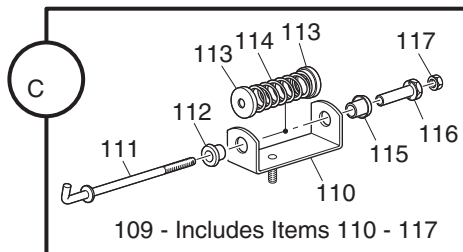
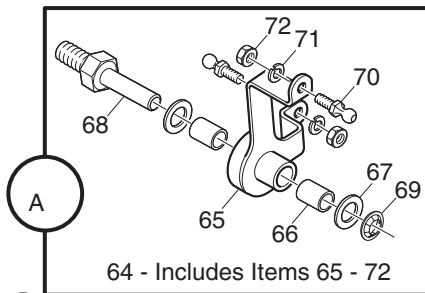


# ACCELERATOR - CABLE AND LINKAGES

83 - Includes Items 84 - 94

104 - Includes Items 105 - 117



Ref Acl 9-2

## ACCELERATOR - CABLE AND LINKAGES

THE USE OF NON U.L. PARTS WILL VOID ANY U.L. LISTING.

When ordering parts, please specify the model and serial number of the product.

\* Indicates a component that is not available as an individual part.

G\*\* Indicates consult Customer Service Department for additional information.

ITEM	PART NO.	1	2	3	4	5	DESCRIPTION	QTY.	
1	72062-G03	PEDAL BOX ASSEMBLY (INCLUDES ITEMS 2 - 47) (ST 350) .....							1
2	70116-G01	ACCELERATOR PEDAL BRACKET.....							1
3	01051-G01	SCREW, #8 - 16 X 1/2" LG .....							4
4	25853-G02	PEDAL BOX AND COVER .....							1
5	00684-G6	SCREW, #8 - 32 X 3/4" LG (STAINLESS STEEL).....							4
6	25861-G01	MICRO SWITCH.....							1
7	01050-G01	SCREW, #4 - 20 X 5/8" LG .....							2
8									
9	72066-G01	CONTROL ARM .....							1
10	23860-G1	BEARING.....							2
11	24621-G1	NYLON WASHER, 5/16".....							2
12	12064-G1	PUSH NUT, 5/16".....							1
13	25768-G01	PIVOT ROD .....							1
14	72199-G01	PIVOT BRACKET .....							1
15	14390-G1	LOCK NUT, 3/8 - 24.....							1
16									
17	72198-G03	MICRO SWITCH CAM.....							1
18	00550-G4	LOCK NUT, 5/16 - 24 .....							1
19	00487-G3	SETSCREW, 1/4 - 20 X 3/8" LG .....							1
20	72074-G01	CONTROL ARM LINK .....							1
21	72225-G01	SHOULDER BOLT, #10 - 24 X 11/16" LG.....							1
22	00532-G4	NUT, 5/16 - 24.....							2
23	17677-G1	SPRING RETAINER .....							1
24	17979-G1	ACCELERATOR ROD BUSHING .....							1
25	73046-G01	COMPRESSION SPRING .....							1
26	17677-G2	SPRING RETAINER .....							1
27	72072-G01	ACCELERATOR ROD .....							1
28	10385-G4	CLEVIS YOKE (ADJUSTABLE).....							1
29	10386-G3	CLEVIS PIN, 5/16" X 13/16" LG .....							1
30	17838-G1	NYLON BUSHING .....							3

## ACCELERATOR - CABLE AND LINKAGES

THE USE OF NON U.L. PARTS WILL VOID ANY U.L. LISTING.

When ordering parts, please specify the model and serial number of the product.

\* Indicates a component that is not available as an individual part.

G\*\* Indicates consult Customer Service Department for additional information.

ITEM	PART NO.	1	2	3	4	5	DESCRIPTION	QTY.
31	17255-G1						TEFLON WASHER, 5/16" .....	1
32	10387-G3						COTTER PIN, 3/32" X 3/4" LG .....	1
33	74432-G01						PEDAL PIVOT PIN .....	1
34	12064-G6						PUSH NUT, 9/32" .....	1
35	14390-G10						LOCK NUT, #10 - 24 .....	1
36	12730-G1						WHEEL BEARING GREASE (NOT ILLUSTRATED) .....	A/R
37								
38	72201-G02						WIRE HARNESS (PEDAL BOX) .....	1
39	17313-G1						LOOM FLEX (BULK) .....	AR
40	17618-G1						WIRE TIE .....	2
41	72065-G02						ACCELERATOR CABLE (ST 350) .....	1
42	00559-G8						WASHER, 5/16" .....	1
43	25799-G01						ACCELERATOR PEDAL ASSEMBLY (INCLUDES ITEMS 44 - 47) .....	1
44	27844-G01						ACCELERATOR PEDAL PAD KIT (INCLUDES ITEMS 45 - 46) .....	1
45	15766-G1						OVAL RIVET, 3/16" X 7/16" LG .....	6
46	27512-G01						ACCELERATOR PEDAL PAD .....	1
47	*						ACCELERATOR PEDAL	
48	00715-G2						BOLT, 5/16 - 18 X 4/5" LG .....	4
49	70135-G01						PEDAL PIVOT COVER .....	1
50								
51	72401-G02						CHOKE CABLE (WITH NUTS) (ST 350) .....	1
52	00568-G4						LOCK WASHER, 9/16" .....	1
53	00545-G4						JAM NUT, 9/16 - 18 .....	1
54								
55	72155-G01						RETAINER .....	1
56	72154-G01						CHOKE CABLE ADAPTER .....	1
57								
58	00544-G4						JAM NUT, 5/16 - 24 .....	2
59	25737-G01						CARBURETOR LINKAGE ROD (INCLUDES ITEMS 60 - 62) .....	1
60	23722-G1						ADJUSTING ROD (SHORT) .....	1